



Short Row House High Street

Partridge Green, RH13 8ET

Asking price £950,000

This idyllic, 3/4 bedroom detached country home feels private and remote but is conveniently situated in the gorgeous village of Partridge Green. The local area offers idealised British country living; your detached, private home backs onto a beautiful green space, and access to the stunning South Downs is a short drive away making this home perfect for families, walkers and dog owners alike. For those who also like a taste of city life, the bustling seaside city of Brighton is a 25 minute drive away, offering the best of both lifestyles at your fingertips with an outstanding restaurant and nightlife scene, as well as beautiful beaches and family entertainment.

Open the drawings and you will see the property boasts a stunning 25 metre driveway and garage with room for all your families and guests vehicles. Walk in to a beautiful entrance hall and proceed through to find a stunning statement, bespoke kitchen and living space with a vaulted ceiling, certain to wow your visitors! Thoughtfully organised, the ground floor holds a spacious utility and wet room, as well as another 2 large living spaces which can be utilised as bedrooms or reception spaces, catering to your families needs. Head upstairs to find the glorious master bedroom with dressing room and en-suite for ultimate comfort, as well as another spacious double bedroom with its own bathroom for spacious and private living.

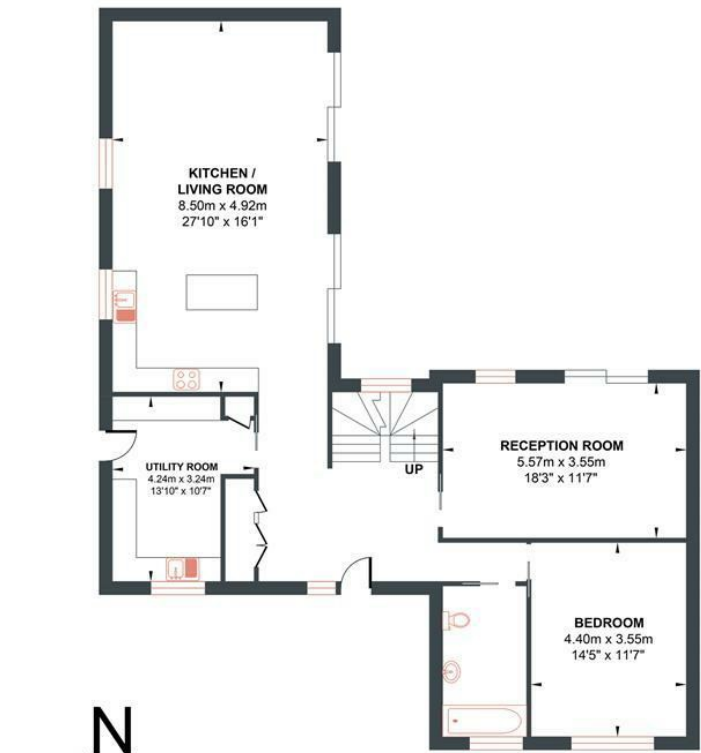
- 3/4 Bedrooms
- High Spec
- Garage
- Partridge Green
- 3 Bathrooms
- New Build
- Off Road Parking
- New Build Warranty
- Garden
- No Chain

Energy Efficiency Rating		
	Current	Potential
Very energy efficient - lower running costs		
(92 plus) A	97	97
(81-91) B		
(69-80) C		
(55-68) D		
(39-54) E		
(21-38) F		
(1-20) G		
Not energy efficient - higher running costs		
England & Wales		EU Directive 2002/91/EC



HIGH STREET, PARTRIDGE GREEN

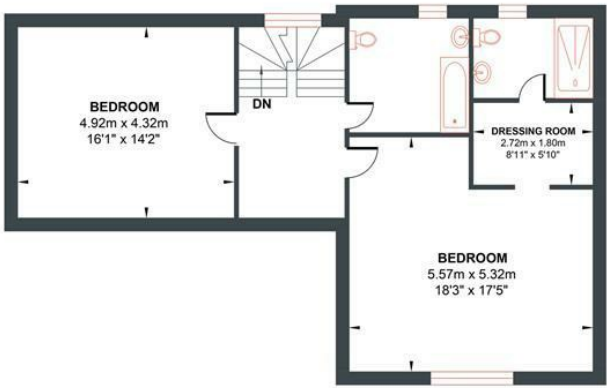
Approximate Gross Internal Area = 197.99 sq m / 2131.14 sq ft
Illustration for identification purposed only, measurements are approximate, not to scale.



N

GROUND FLOOR

Approximate Floor Area
1288.44 sq ft
(119.70 sq m)



FIRST FLOOR

Approximate Floor Area
842.70 sq ft
(78.29 sq m)